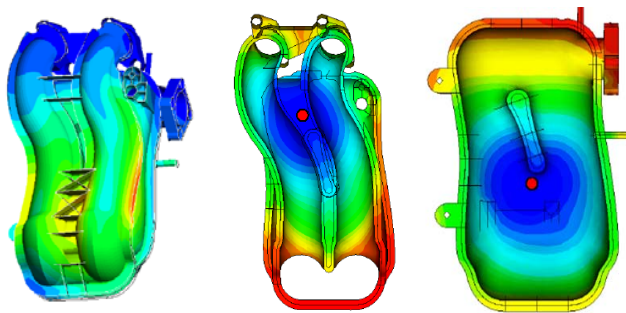


# BASF developed the first PAIM for TATA



Part Testing



CAE

**Part Producer : Tata Visteon (Tata Nano)**

**Application : Plastic Air Intake Manifold**

**Previous Material : Aluminum**

**Customer Value**

- Full CAE analyses
- Full validation of finished parts
- Shortest development time

**Advantages with Ultramid®**

- Weight reduction up to **40%**
- Cost saving up to **30%**

A-KTE, Engineering Plastics Asia Pacific

# Product disclaimer



The information and data given here are based on our current knowledge and experience. This does not relieve the purchaser of our products from incoming inspection. The information and data do not describe the suitability of the product for a specific application. Composition - and durability statements - as well as any other statements are not to be considered as a warranty.

The values contained herein are based on analysis/testing of laboratory test specimens and represent data that fall within the normal range of properties for natural materials, unless stated otherwise. Colorants and additives may alter properties.

This information is provided as a service for comparative purposes only and in no way constitutes any product specification or the like. For component design the data contained herein are applicable as guideline only.