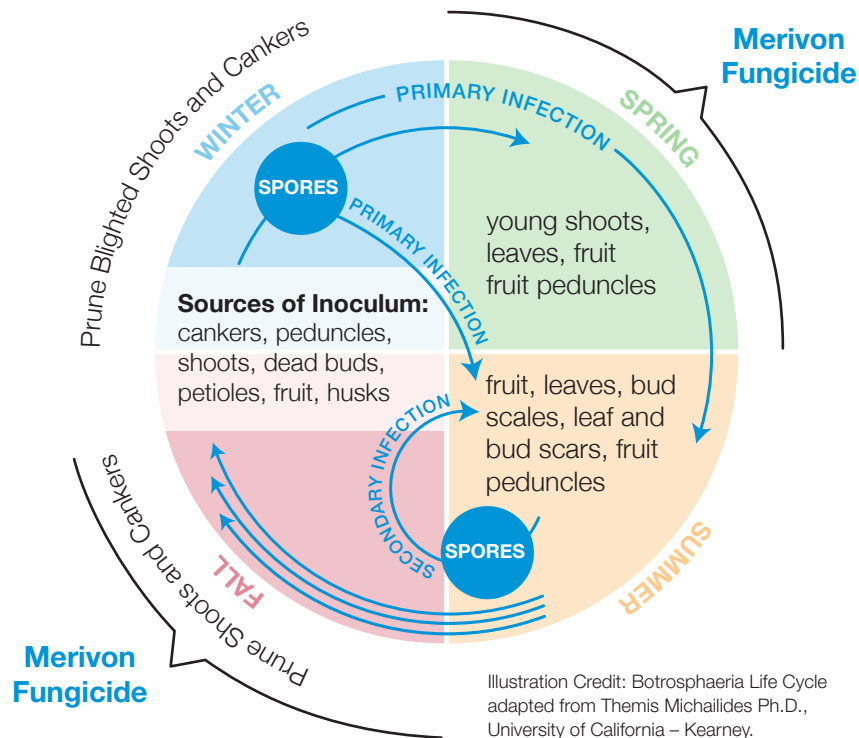


## Botryosphaeria Control in Walnuts

### Benefits of Merivon® Fungicide

- Longer-lasting disease protection
- More consistent performance for maximizing walnut orchard potential
- Advanced Plant Health benefits help drive higher yields and quality potential

### Botryosphaeria Life Cycle and Management



### Management Practices

- Prune dead branches and blighted shoots in dry weather; remove from orchard and destroy
- Avoid sprinkler irrigation that wets the canopy
- Implement timely applications of an effective fungicide such as Merivon Fungicide
  - Prior to Spring rainfall or precipitation
  - Postharvest

## Best Use Recommendations

- Use Rate: 6.0–6.5 oz/A
- Adjuvants: NIS or OS
- Application: Air or Ground
- PHI: 14 Days
- REI: 12 Hours

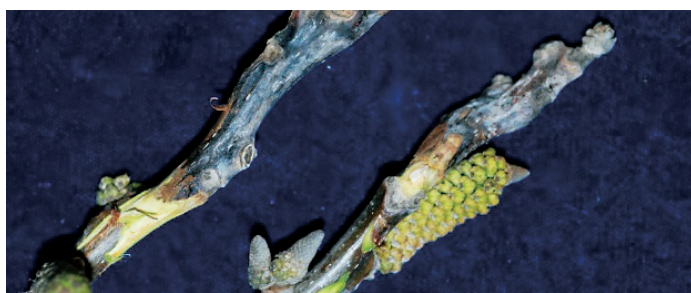


## Botryosphaeria in Walnuts

### Six Types of Symptoms & Management



**Branch Canker and Dieback**



**Cankers in Terminal Twigs**



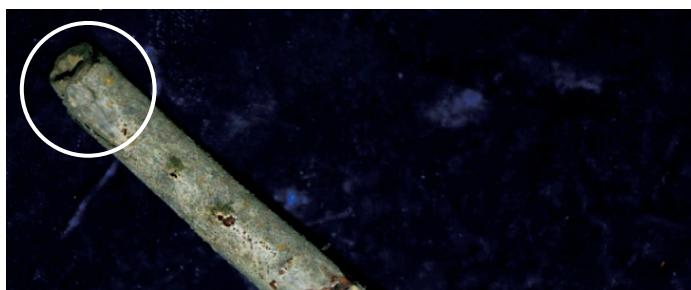
**Blighted Shoots**



**Walnut Blight Wounds Allow for Pathogen Entry**



**Active Infection of Fruit and Leaves**



**Pruning Wood (Cut) Infections**

Photo Credit: Themis Michailides Ph.D., University of California – Kearney.