

# Ultramid® Expand



## Polyamide based particle foam with unique properties

- High heat deflection temperature
- High temperature resistance
- Excellent mechanical properties at temperature >120°C
- Chemical resistance against automotive liquids
- Drop-in solution in EPP tooling (steam chest molding)
- Recyclability
- Simulation models available
- Processable via cathodic dip coating

Product	Bead size	Bulk density	
Ultramid® Expand D4S2925 UN	2.5mm	290g/L	Uncolored
Ultramid® Expand D4H2925 BK23381	2.5mm	290g/L	Heat stabilized
Ultramid® Expand <b>Experimental</b> D4H3510 BK23381	1.0mm	350g/L	Heat stabilized

## Potential applications



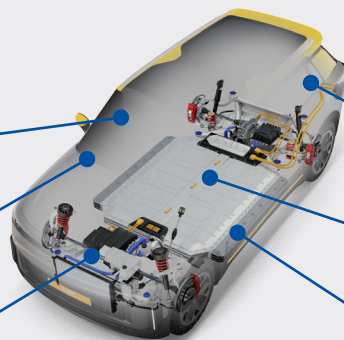
Passenger protection



Structural inserts



Heat deflection



Complex 3D shapes



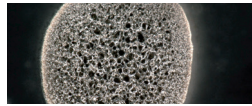
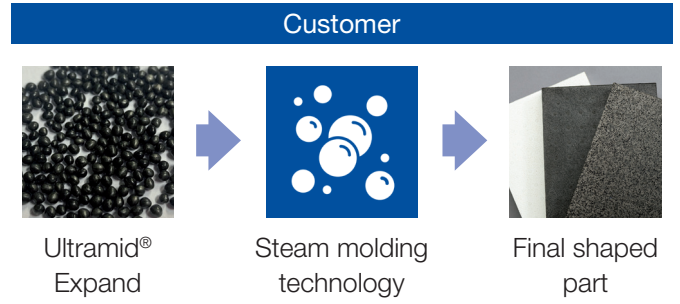
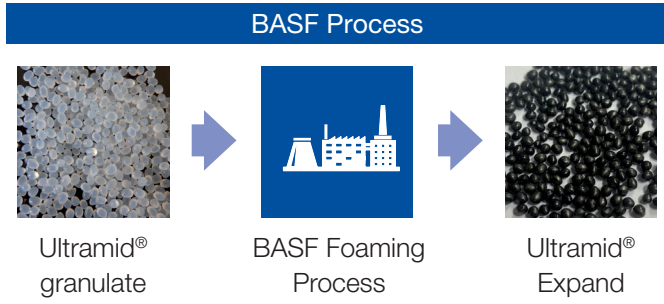
Cell holder



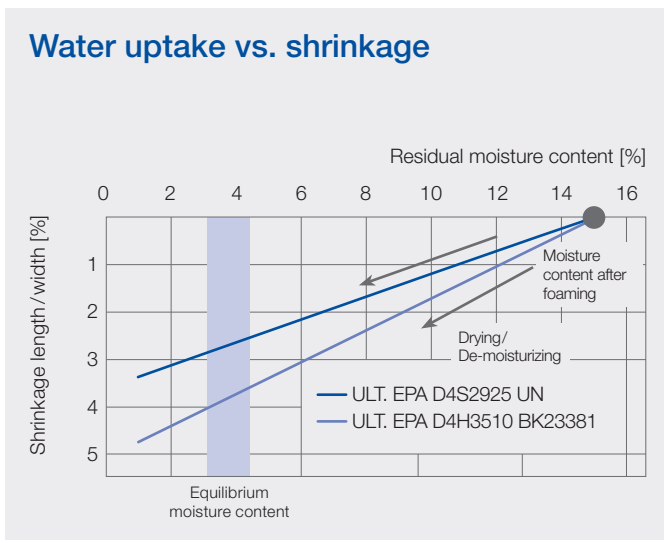
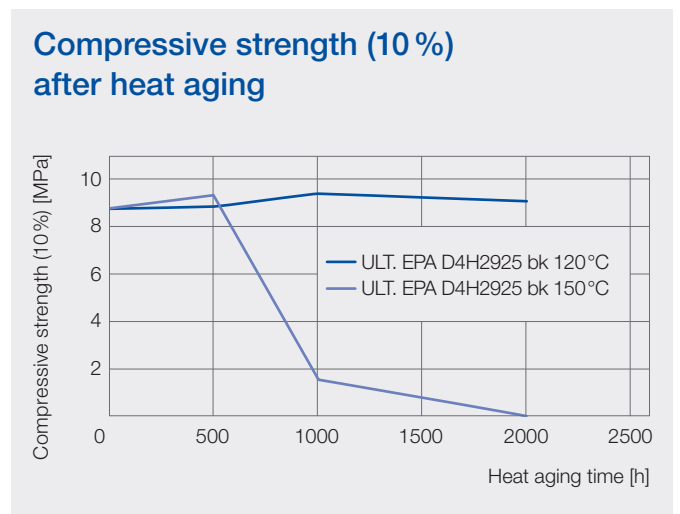
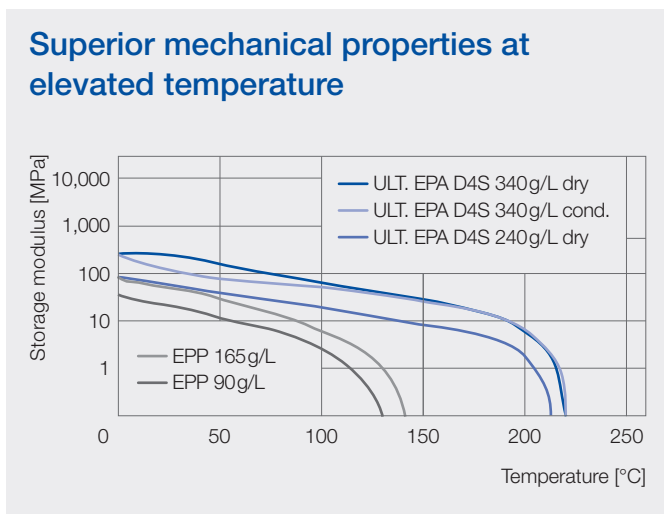
Battery protection



# Production process



Cellular structure results in drastic weight-reduction with high mechanical properties!



### Full CAE support available including particle filling and crash simulation

**Ultra Infopoint**  
+49 621 60-78780  
ultraplaste.infopoint@basf.com

Please visit our websites  
ultramid-expand.basf.com  
plastics.basf.com

