

L-Menthyl Acetate FCC

Mint • Fruity • Herbal

Fragrances: Versatile product for any mint composition. Decent cooling profile, less sharp than L-Menthol. Blends perfectly with mint, fruit, floral, woody, amber and musk notes.

Flavors: Very useful product for mint, fruity and herbal compositions. Ideal for blends with Menthol and Menthone.

Physical Chemical Properties

CAS number	2623-23-6
Formula	C ₁₂ H ₂₂ O ₂
MW	198.3
Appearance	Clear colorless liquid
Flashpoint	95°C
Vapor pressure (20°C)	0.1 hPa
Purity	Min. 98.0 %
Log P	4.39

Typical Use Level

Between 0.5 and 5%

Tenacity

LASTS 24 HOURS
ON A BLOTTER

4 Weeks

3 Weeks

2 Weeks

1 Week

5 Days

3 Days

2 Days

1 Day

16 Hours

12 Hours

8 Hours

2 Hours

Stability

Fine Fragrance **★★★★**

Shampoo **★★★★**

Shower Gel **★★★★**

Bar Soap **★★★★**

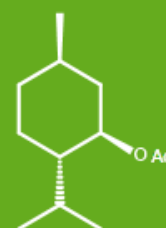
Hand Lotion **★★★★**

Softener **★★★**

Detergent Liquid **★★★**

Detergent Powder **★★★**

Acid Cleaner **-**



Cyclohexanol, 5-methyl-2-(1-methylethyl)-, 1-acetate, (1R, 2S, 5R)-

This document and any information provided herein does not constitute a legally binding obligation of BASF and has been prepared in good faith and is believed to be accurate as of the date of issuance. Unless expressly agreed otherwise in writing in a supply contract or other written agreement between you and BASF:

- (a) To the fullest extent not prohibited by the applicable laws, BASF EXPRESSLY DISCLAIMS ALL REPRESENTATIONS, WARRANTIES, CONDITIONS OR GUARANTEES OF ANY KIND, WHETHER EXPRESS OR IMPLIED, WRITTEN OR ORAL, BY FACT OR LAW, INCLUDING ANY IMPLIED WARRANTIES, REPRESENTATIONS OR CONDITIONS OF MERCHANTABILITY, FITNESS FOR A PARTICULAR PURPOSE, SATISFACTORY QUALITY, NON-INFRINGEMENT AND ANY REPRESENTATIONS, WARRANTIES, CONDITIONS OR GUARANTEES, ARISING FROM STATUTE COURSE OF DEALING OR USAGE OF TRADE AND BASF HEREBY EXPRESSLY EXCLUDES AND DISCLAIMS ANY LIABILITY RESULTING FROM OR IN CONNECTION WITH THIS DOCUMENT OR ANY INFORMATION PROVIDED HEREIN, including, without limitation, any liability for any direct, consequential, special, or punitive damages relating to or arising therefrom, except in cases of (i) death or personal injury, (ii) BASF's or its agents and assistants willful misconduct, fraud or fraudulent misrepresentation or (iii) any matter in respect of which it would be unlawful for BASF to exclude or restrict liability under the applicable laws;
- (b) Any information provided herein can be changed at BASF's sole discretion anytime and neither this document nor the information provided herein may be relied upon to satisfy obligations you may have to undertake your own inspections and evaluations;
- (c) BASF rejects any obligation to, and will not, automatically update this document and any information provided herein, unless required by applicable law; and
- (d) You are responsible for confirming that you have retrieved the most current version of this document from BASF.
- (e) This document or any information provided herein must not be used for purposes of pharmaceutical registrations.

See DISCLAIMER last page